

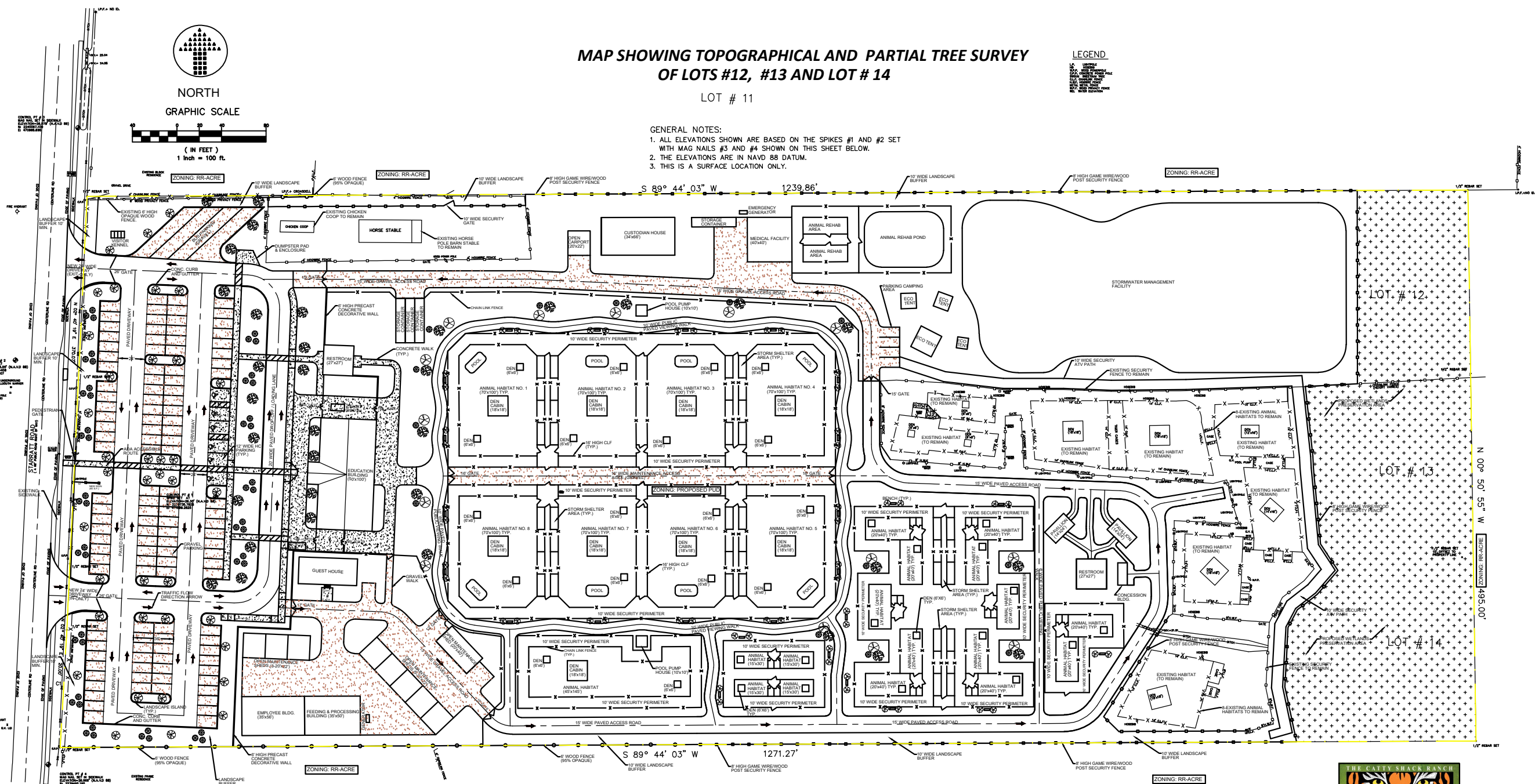
MAP SHOWING TOPOGRAPHICAL AND PARTIAL TREE SURVEY
OF LOTS #12, #13 AND LOT # 14

LOT # 11

- GENERAL NOTES:
1. ALL ELEVATIONS SHOWN ARE BASED ON THE SPIKES #1 AND #2 SET WITH MAG NAILS #3 AND #4 SHOWN ON THIS SHEET BELOW.
2. THE ELEVATIONS ARE IN NAVD 88 DATUM.
3. THIS IS A SURFACE LOCATION ONLY.

LEGEND

- 1. 1/2" WIDE SECURITY FENCE
- 2. 1/2" WIDE SECURITY FENCE TO REMAIN
- 3. 1/2" WIDE SECURITY FENCE TO REMAIN
- 4. 1/2" WIDE SECURITY FENCE TO REMAIN
- 5. 1/2" WIDE SECURITY FENCE TO REMAIN
- 6. 1/2" WIDE SECURITY FENCE TO REMAIN
- 7. 1/2" WIDE SECURITY FENCE TO REMAIN
- 8. 1/2" WIDE SECURITY FENCE TO REMAIN
- 9. 1/2" WIDE SECURITY FENCE TO REMAIN
- 10. 1/2" WIDE SECURITY FENCE TO REMAIN
- 11. 1/2" WIDE SECURITY FENCE TO REMAIN
- 12. 1/2" WIDE SECURITY FENCE TO REMAIN
- 13. 1/2" WIDE SECURITY FENCE TO REMAIN
- 14. 1/2" WIDE SECURITY FENCE TO REMAIN
- 15. 1/2" WIDE SECURITY FENCE TO REMAIN
- 16. 1/2" WIDE SECURITY FENCE TO REMAIN
- 17. 1/2" WIDE SECURITY FENCE TO REMAIN
- 18. 1/2" WIDE SECURITY FENCE TO REMAIN
- 19. 1/2" WIDE SECURITY FENCE TO REMAIN
- 20. 1/2" WIDE SECURITY FENCE TO REMAIN
- 21. 1/2" WIDE SECURITY FENCE TO REMAIN
- 22. 1/2" WIDE SECURITY FENCE TO REMAIN
- 23. 1/2" WIDE SECURITY FENCE TO REMAIN
- 24. 1/2" WIDE SECURITY FENCE TO REMAIN
- 25. 1/2" WIDE SECURITY FENCE TO REMAIN
- 26. 1/2" WIDE SECURITY FENCE TO REMAIN
- 27. 1/2" WIDE SECURITY FENCE TO REMAIN
- 28. 1/2" WIDE SECURITY FENCE TO REMAIN
- 29. 1/2" WIDE SECURITY FENCE TO REMAIN
- 30. 1/2" WIDE SECURITY FENCE TO REMAIN
- 31. 1/2" WIDE SECURITY FENCE TO REMAIN
- 32. 1/2" WIDE SECURITY FENCE TO REMAIN
- 33. 1/2" WIDE SECURITY FENCE TO REMAIN
- 34. 1/2" WIDE SECURITY FENCE TO REMAIN
- 35. 1/2" WIDE SECURITY FENCE TO REMAIN
- 36. 1/2" WIDE SECURITY FENCE TO REMAIN
- 37. 1/2" WIDE SECURITY FENCE TO REMAIN
- 38. 1/2" WIDE SECURITY FENCE TO REMAIN
- 39. 1/2" WIDE SECURITY FENCE TO REMAIN
- 40. 1/2" WIDE SECURITY FENCE TO REMAIN
- 41. 1/2" WIDE SECURITY FENCE TO REMAIN
- 42. 1/2" WIDE SECURITY FENCE TO REMAIN
- 43. 1/2" WIDE SECURITY FENCE TO REMAIN
- 44. 1/2" WIDE SECURITY FENCE TO REMAIN
- 45. 1/2" WIDE SECURITY FENCE TO REMAIN
- 46. 1/2" WIDE SECURITY FENCE TO REMAIN
- 47. 1/2" WIDE SECURITY FENCE TO REMAIN
- 48. 1/2" WIDE SECURITY FENCE TO REMAIN
- 49. 1/2" WIDE SECURITY FENCE TO REMAIN
- 50. 1/2" WIDE SECURITY FENCE TO REMAIN
- 51. 1/2" WIDE SECURITY FENCE TO REMAIN
- 52. 1/2" WIDE SECURITY FENCE TO REMAIN
- 53. 1/2" WIDE SECURITY FENCE TO REMAIN
- 54. 1/2" WIDE SECURITY FENCE TO REMAIN
- 55. 1/2" WIDE SECURITY FENCE TO REMAIN
- 56. 1/2" WIDE SECURITY FENCE TO REMAIN
- 57. 1/2" WIDE SECURITY FENCE TO REMAIN
- 58. 1/2" WIDE SECURITY FENCE TO REMAIN
- 59. 1/2" WIDE SECURITY FENCE TO REMAIN
- 60. 1/2" WIDE SECURITY FENCE TO REMAIN
- 61. 1/2" WIDE SECURITY FENCE TO REMAIN
- 62. 1/2" WIDE SECURITY FENCE TO REMAIN
- 63. 1/2" WIDE SECURITY FENCE TO REMAIN
- 64. 1/2" WIDE SECURITY FENCE TO REMAIN
- 65. 1/2" WIDE SECURITY FENCE TO REMAIN
- 66. 1/2" WIDE SECURITY FENCE TO REMAIN
- 67. 1/2" WIDE SECURITY FENCE TO REMAIN
- 68. 1/2" WIDE SECURITY FENCE TO REMAIN
- 69. 1/2" WIDE SECURITY FENCE TO REMAIN
- 70. 1/2" WIDE SECURITY FENCE TO REMAIN
- 71. 1/2" WIDE SECURITY FENCE TO REMAIN
- 72. 1/2" WIDE SECURITY FENCE TO REMAIN
- 73. 1/2" WIDE SECURITY FENCE TO REMAIN
- 74. 1/2" WIDE SECURITY FENCE TO REMAIN
- 75. 1/2" WIDE SECURITY FENCE TO REMAIN
- 76. 1/2" WIDE SECURITY FENCE TO REMAIN
- 77. 1/2" WIDE SECURITY FENCE TO REMAIN
- 78. 1/2" WIDE SECURITY FENCE TO REMAIN
- 79. 1/2" WIDE SECURITY FENCE TO REMAIN
- 80. 1/2" WIDE SECURITY FENCE TO REMAIN
- 81. 1/2" WIDE SECURITY FENCE TO REMAIN
- 82. 1/2" WIDE SECURITY FENCE TO REMAIN
- 83. 1/2" WIDE SECURITY FENCE TO REMAIN
- 84. 1/2" WIDE SECURITY FENCE TO REMAIN
- 85. 1/2" WIDE SECURITY FENCE TO REMAIN
- 86. 1/2" WIDE SECURITY FENCE TO REMAIN
- 87. 1/2" WIDE SECURITY FENCE TO REMAIN
- 88. 1/2" WIDE SECURITY FENCE TO REMAIN
- 89. 1/2" WIDE SECURITY FENCE TO REMAIN
- 90. 1/2" WIDE SECURITY FENCE TO REMAIN
- 91. 1/2" WIDE SECURITY FENCE TO REMAIN
- 92. 1/2" WIDE SECURITY FENCE TO REMAIN
- 93. 1/2" WIDE SECURITY FENCE TO REMAIN
- 94. 1/2" WIDE SECURITY FENCE TO REMAIN
- 95. 1/2" WIDE SECURITY FENCE TO REMAIN
- 96. 1/2" WIDE SECURITY FENCE TO REMAIN
- 97. 1/2" WIDE SECURITY FENCE TO REMAIN
- 98. 1/2" WIDE SECURITY FENCE TO REMAIN
- 99. 1/2" WIDE SECURITY FENCE TO REMAIN
- 100. 1/2" WIDE SECURITY FENCE TO REMAIN

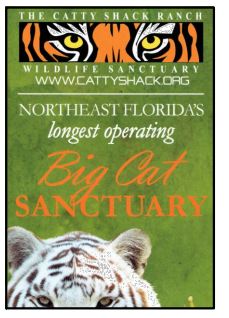


CURVE	RADIUS	ARC LENGTH	CHORD LENGTH	CHORD BEARING	DELTA ANGLE
C1	5759.58'	105.61'	105.61'	N 03°11' 51" E	0° 03' 02"

THE CATTY SHACK RANCH WILDLIFE SANCTUARY - PUD MASTER PLAN
SCALE: 1"=100'

LOT # 15

PARKING CALCULATION:
PROPOSED PARKING SPACES IS BASED ON ACTUAL VEHICLE DATA FROM JANUARY, 2018 THROUGH PART OF JUNE, 2018.
MAXIMUM VEHICLES ONSITE AT ONE TIME = 124 (THIS NUMBER INCLUDES PATRONS AND EMPLOYEES)
NUMBER REGULAR SPACE PROVIDED = 130 SPACES
NUMBER OF HC SPACES REQUIRED = 8 SPACES
TOTAL NUMBER OF SPACES PROVIDED = 126 SPACES
NUMBER OF BUS PARKING PROVIDED = 4 SPACES



DATE	REVISIONS	JOB NO.	DESIGN BY
06/22/2018	PUD PLANNING DEPARTMENT COMMENTS.	1715	R.A.M.
06/27/2018	PUD PLANNING DEPARTMENT COMMENTS.		
		DATE	DRAWING BY
		01/16/2018	R.A.M.

THE CATTY SHACK RANCH WILDLIFE SANCTUARY
1860 STARRATT ROAD
JACKSONVILLE, FL 32226



Rafael A. Morla, PE (Lic. No. 35144)
MAR Engineering Group(COA No. 30417)
1836 Melrose Plantation Drive
Jacksonville, FL 32223
Tel: (904)248-1966
Email: rmorla96640@aol.com

COPYRIGHT © ALL RIGHTS RESERVED
SHEET 1 OF 1 MP-1